

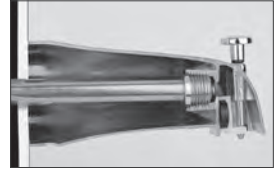


614-2

Full-Slip Male Adapter

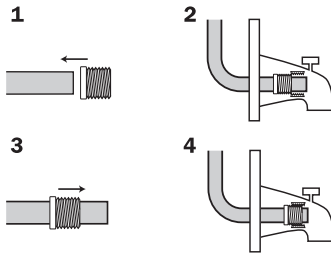
Brass Female Sweat × MIP Thread

- Eliminates tedious measuring
- 3/4" and 1" sizes are ideal for closet or urinal stub out adapters
- Replaces male adapters when hex is not necessary



1/2" size is ideal for use with our tub spout ells.

Tub Spout Application



1. Slide slip adapter onto copper tube, threads out.
2. Push adapter to desired location with tub spout.
3. Slide slip adapter 1/4" toward open end.
4. Solder adapter in place. Let cool. Install tub spout.

Related Products

Smart Spout

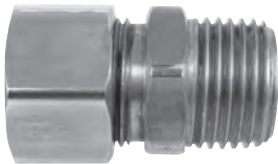


Item No	Connection	Pkg	Min Qty	Case Qty
614-2	1/2" female sweat × 1/2" MIP thread	B	50	500
614-3	3/4" female sweat × 3/4" MIP thread	B	50	500
614-4	1" female sweat × 1" MIP thread	B	25	250

Full-Slip Male Adapter

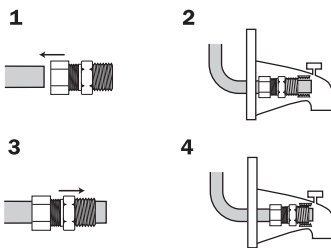
Brass Compression × MIP Thread

- Full-slip fitting slides completely over 1/2" CTS
- Use wherever 1/2" MIP threads must be replaced without soldering
- Use on 1/2" CTS copper tube only



614-22C

Tub Spout Application



1. Slide onto copper tube, threads out.
2. Push adapter back with tub spout.
3. Slide adapter 1/4" toward open end.
4. Tighten comp. nut and install tub spout.

Item No	Connection	Pkg	Min Qty	Case Qty
614-22C	5/8" compression × 1/2" MIP	B	25	250
614-22CPK2	5/8" compression × 1/2" MIP, 1/bag	C*	20	20